

Shift

SHIFT GEARS TO MORE PERSISTENT PRODUCTION



FEATURES

Large deep-set crowns tolerant of traffic

Persistent long stand life

Exceptional disease resistance

High level of multifoliolate expression

Fall Dormancy	3.0
Winter Survival	1.4
Disease Resistance Index	35/35

Stem Nematode	R
Southern Root Rot Nematode	Test Ongoing
Northern Root Rot Nematode	Test Ongoing
Pea Aphid	Test Ongoing
Spotted Alfalfa Aphid	Test Ongoing

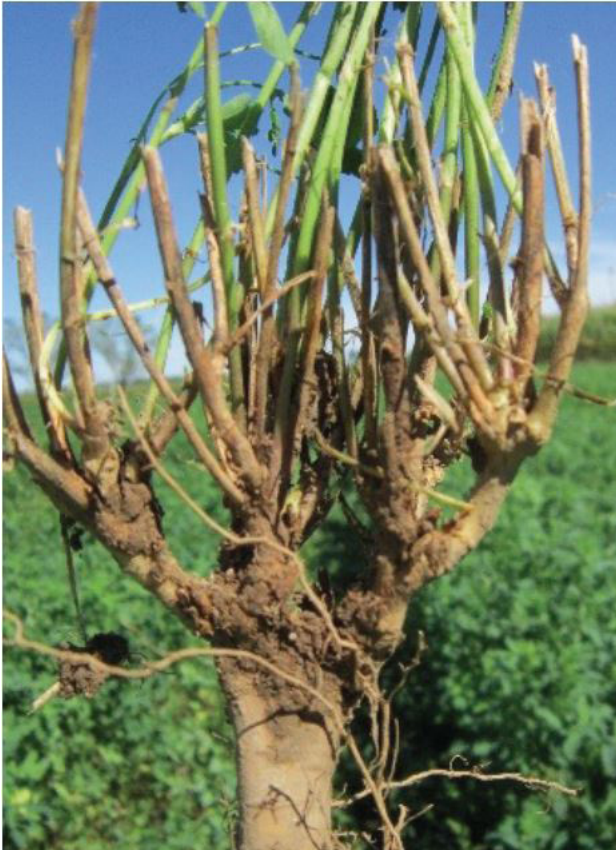
Bacterial Wilt	HR
Verticillium Wilt	HR
Fusarium Wilt	HR
Anthracnose Race 1	HR
Phytophthora Root Rot	HR
Aphanomyces Root Rot (Race 1)	HR
Aphanomyces Root Rot (Race 2)	HR

Highly Resistant (HR) > Resistant (R) > Susceptible (S)

See reverse for comparison trials and find us at:

brettyoung.ca/shift

Forages



Shift's sunken crown

Shift provides a high level of winter hardiness and durability for profitable hay production over the life of the stand. Large, deep-set crowns allow this variety to stand up to traffic pressure and persist in northern climates. Shift features a dense, dark green canopy with high multifoliate leaf expression providing high quality feed value. It is highly resistant to all major alfalfa diseases, including Aphanomyces Race 1 and Race 2 root rot, contributing to Shift's long stand life and outstanding persistence.

DISTINCT BY DESIGN

At BrettYoung we are proud of the strategic partnerships we have with world-class organizations through which we source leading technologies and genetics. This allows us to bring **distinct** market choices that deliver you performance and value. **By design**, our success will always be rooted within your success. Like you, we are independent, resolute, and **Distinct By Design**.



Canada's Largest Independent Seed Company

For more information visit brettyoung.ca or call us toll-free at 1-800-665-5015.